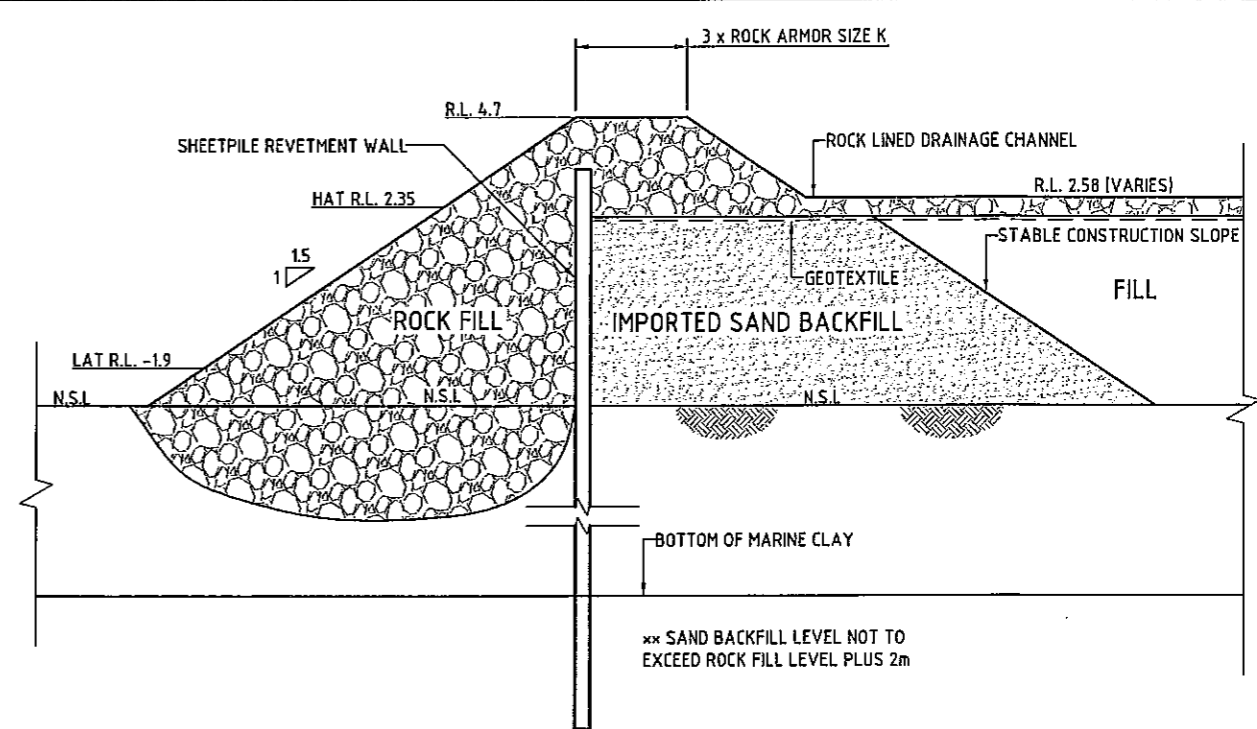


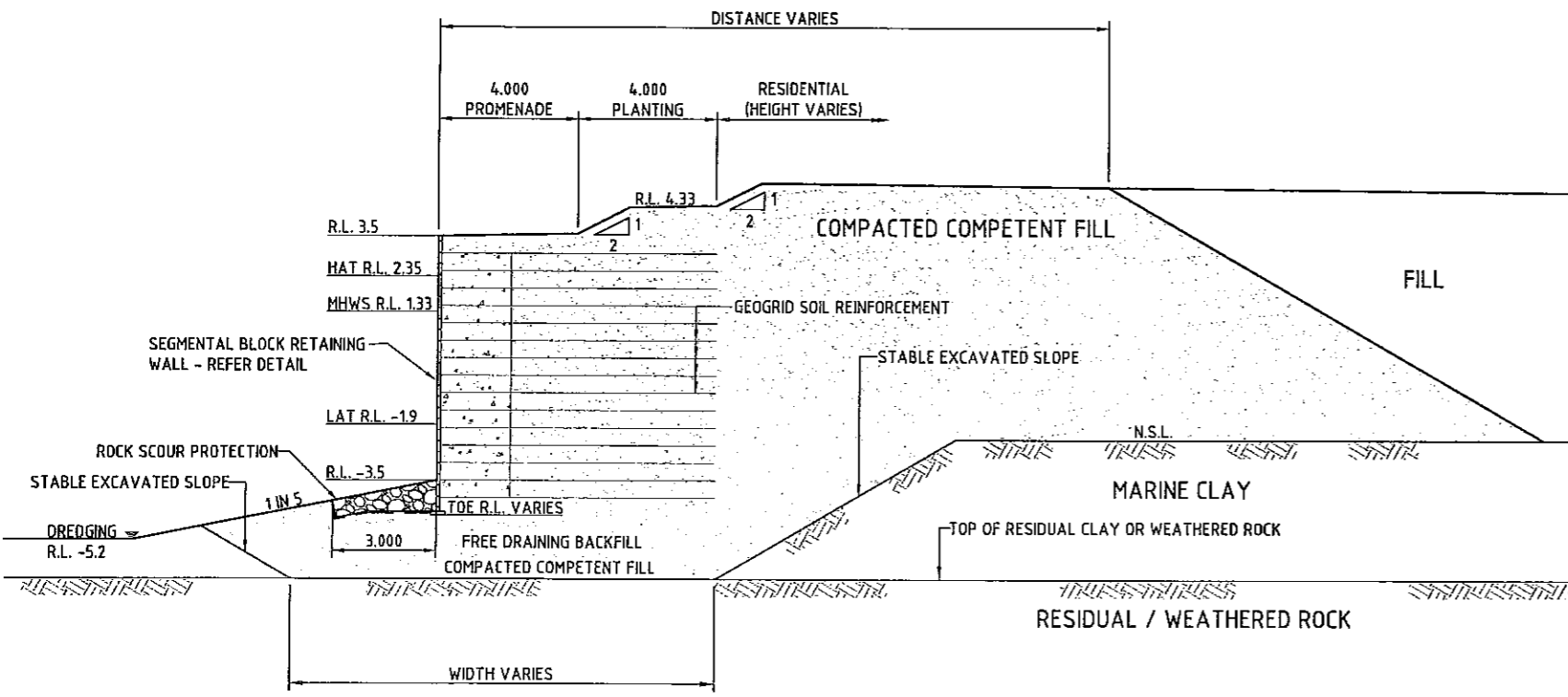
WALL 1 - REVETMENT WALL
OPTION WITH ROCK FACED SHEET PILE WALL CH 1040 TO 1240
 SCALE 1:100



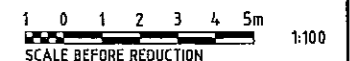
WALL 1 - REVETMENT WALL
OPTION WITH ROCK FACED SHEET PILE WALL CH 1240 TO 1354.87
 SCALE 1:100

NOTES:

- REFER TO DRAWING No. 7900/48/01-301 AND 302 FOR WALL LONGITUDINAL SECTIONS FOR REVETMENT WALL TYPES



WALL 1 - REVETMENT
SEGMENTAL BLOCK WALL
 SCALE 1:100



DATE PLOTTED: 01 August 2008 - 11:03am

REV.	DATE	REVISIONS	REC.	APPR.

© Cardno (Qld) Pty Ltd All Rights Reserved 2005.
 Copyright in the whole and every part of this drawing belongs to Cardno (Qld) Pty Ltd and may not be used, sold, transferred, copied or reproduced in whole or in part in any manner or form or on any media, to any person other than by agreement with Cardno (Qld) Pty Ltd.
 This document is prepared by Cardno (Qld) Pty Ltd solely for the benefit of and use by the client in accordance with the terms of the retainer. Cardno (Qld) Pty Ltd does not and shall not assume any responsibility or liability whatsoever to any third party arising out of any use or reliance by third party on the content of this document.

DESIGNED: <i>JA</i>	A1	DATUM: A.H.D.
DRAWN: <i>SD</i>		
CHECKED: <i>AC</i>		
RECOMMENDED: PROJ. MAN. <i>Sturt</i>	APPROVED: PROJ. DIR. <i>Sturt</i>	
CAD FILE: L:\7900-48\01\Acad\7900-48.dwg	RPEQ: 1470	
XREF: XL-A1-BD-SHT		

Cardno (Qld) Pty Ltd
 Level 1, 5 Gardner Close, Milton 4084
 P.O. Box 308, Toowoomba 4006
 Email: cardno@cardno.com.au
 Web: www.cardno.com.au
 ACN: 051 074 992

Cardno

OFFICES: TELEPHONE FAX
 Brisbane (07) 3399 8822 (07) 3389 9722
 Sydney (02) 9416 8233 (02) 9416 8529
 Gold Coast (07) 5539 9333 (07) 5539 4847
 Sunshine Coast (07) 5443 2555 (07) 5443 5842
 Townsville (07) 4772 1168 (07) 4721 2508
 Hervey Bay (07) 4124 5455 (07) 4124 5155
 Central Coast (02) 4323 2858 (02) 4324 3251
 Melbourne (03) 8818 7755 (03) 9818 7033
 Rockhampton (07) 4924 7900 (07) 4925 4375
 Toowoomba (07) 4637 6122 (07) 4637 6155

SHUTE HARBOUR MARINA DEVELOPMENT

SHUTE HARBOUR MARINA
 MARINA
 REVETMENT WALL DETAILS - WALL 1

DATE: 1-28-2008
 DRAWING No: **7900/48/01-307**